



CYNGOR SIR
YNYS MÔN
ISLE OF ANGLESEY
COUNTY COUNCIL

Dealing with Structural Economic and Labour Market change – A Local Authority Perspective

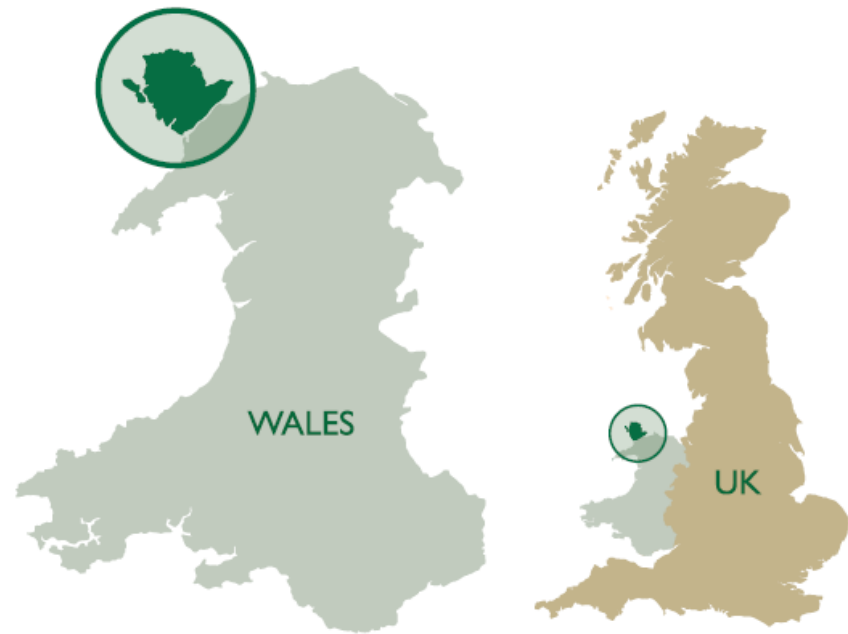
Dylan J. Williams

Head of Economic & Community Regeneration
Isle of Anglesey County Council

Overview of Presentation

Purpose: Raise understanding and awareness of practical local approach to structural economic change (policy to delivery)

- Context
- Outlook
- Challenges
- Response to date
- The Future
- Conclusions



Did you know?

- How long is the Anglesey Coastal path? – 125 miles / 200km
- Where on Anglesey did the designer of the Land Rover live?
 - Dwyran
- Who was the Anglesey mathematician who invented the π symbol?
 - William Jones (1675 – 1749)
- Where was the first WI in Britain established, which is also home to the longest place name in Europe?
 - Llanfairpwllgwyngyllgogerychwyrndrobwlllantysiliogogoch

Anglesey Economic Cycle

- 20th Century - Heavily relied on Agriculture, still a very important sector today
- 1960s & 70s (employment) – Much of the Island's employees were employed by a handful of major employers (AAM, Wylfa)
- Early 21st Century (unemployment) – Demise of the major employers, major job losses and a change in the economic fortunes of Anglesey, but growth in the tourism industry.
- Now entering a new period/cycle of positive economic change

Economic Overview

- No retail sector of quality
- 85% of companies employ less than 9 people
- Many small businesses are in low quality, seasonal, lifestyle industries
- Many key companies are foreign owned
- Majority of businesses servicing the local market; and
- Very limited inward investment successes

Recent Job Losses



Peboc Eastman closed in 2008,
resulting in 65 job losses



Anglesey Aluminium closed in 2009,
employed 540 people at its peak



Great Lakes closed in 2004,
resulting in 100 job losses



Welsh Country Foods closed in 2013,
resulting in 310 job losses

Environmental Quality



Scenic Views



Industrial Heritage



Historic sites



Coastal areas

Anglesey in figures...

	Anglesey	Wales
Population	69,913	3,063,758
Long term unemployed (2011)	1,423 (2.1%)	52,084 (1.7%)
% Economically Active People who are unemployed	8.7%	8.1%
Average Gross Weekly Pay (FT) 2013	£452.90	£472.30
Number of hours worked (FT) 2013	38.6 hours	37.5 hours
% Unemployed: Age 16-24	909 (1.3%)	1.1% (NW Wales)
Gross Added Value - £ per head (2012)	£10,364	£15,401 (Wales), £21,295 (UK)
Demography: % of people aged 16-24 % of people aged 64-75	6,991 (10%) 8,600 (12.3%)	373,778 (12.2%) 300,248 (9.8%)

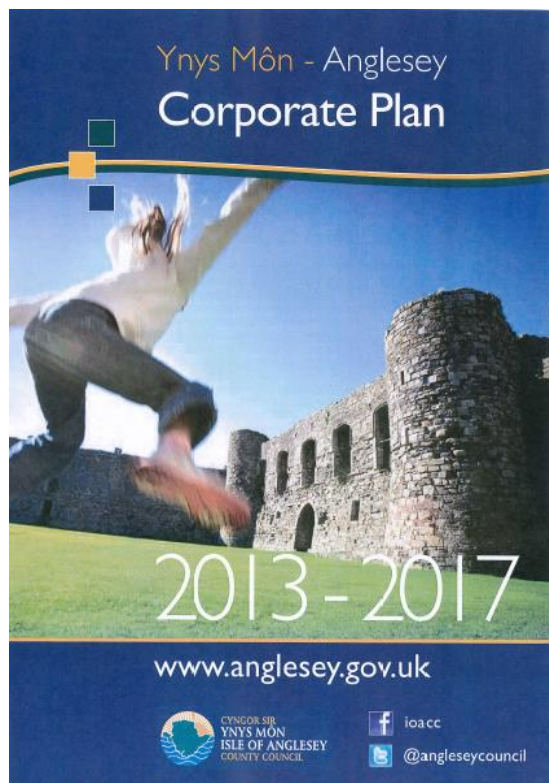
Socio-Economic Challenges

- Regional labour displacement
- Infrastructure capacity constraints
- Declining levels of GVA
- High levels of Youth Unemployment
- High levels of economic inactivity
- Many of Wales' most deprived wards
- High levels of out-migration of young people
- Substantial job losses

The Local Response

Isle of Anglesey County Council is committed to working in partnership with all relevant stakeholders to create a prosperous future for the Island's residents

IACC Corporate Plan



Isle of Anglesey County Council set out three main priorities in the 2013-2017 Corporate Plan, these include:

- Supporting the most vulnerable
- **Developing the economy**
- Raising the standards of and modernising our schools

Using these priorities, seven promises were established:

- ❖ Transform Older Adult Social Care
- ❖ **Regenerating our Communities and Developing the Economy**
- ❖ Improving Education, Skills and Modernising our Schools
- ❖ Increasing our Housing Options and Reducing Poverty
- ❖ Transforming our Leisure and Library Provision
- ❖ Becoming Customer, Citizen and Community Focused
- ❖ Transforming our Information and Communication Technologies (ICT)

Policy Context

- Single Integrated Plan
- Joint Local Development Plan
- Service Delivery Plan
- Destination Management Plan
- Energy Island Programme
- Enterprise Zones
- New Nuclear Build (NNB) Supplementary Planning Guidance (SPG)

E&CR Service Vision & Aims

Service Vision – ‘to create a better Island to live, work and visit by delivering activities to develop Anglesey’s economy, regenerate its communities and transform current leisure provision’.

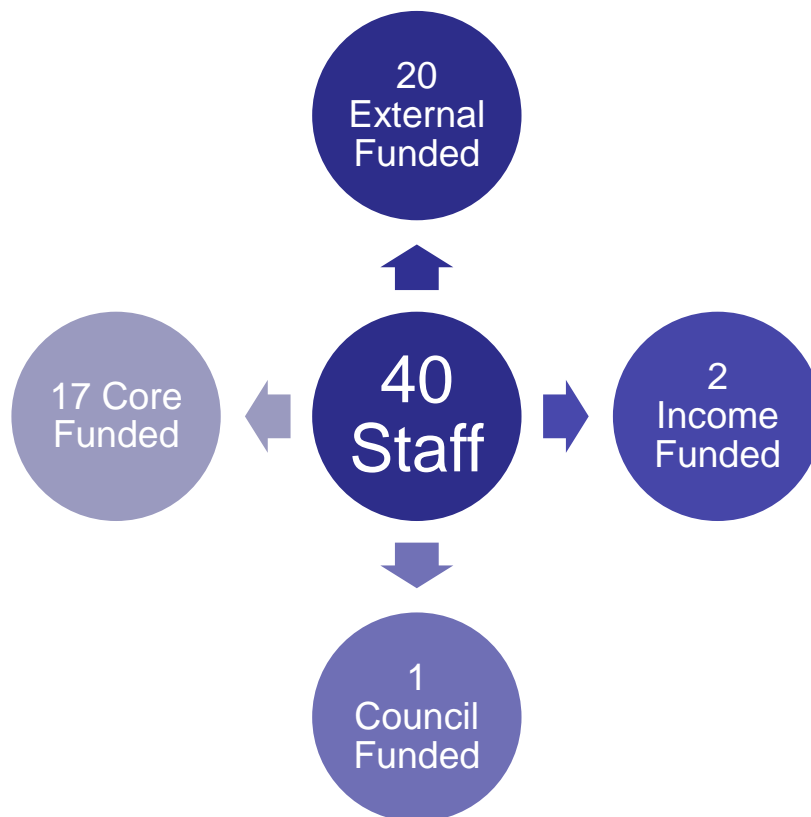
The Service aims to:

- Improve the local economy and create jobs and prosperity for local residents;
- Ensure local people, communities and businesses capitalise upon all future transformational opportunities;
- Improve quality of life and reduce socio-economic inequalities;
- Provide formal opportunities for people on Anglesey to live their lives in a health way;
- Create vibrant and healthy communities;
- Develop and promote the Island’s tourism offer (and effectively manage the County Council’s coastal assets).

Economic Development Resources 2015/2016

£1,060,730
Core Budget
and £1.37m
grant funding

2015/2016 Budget



Equivalent number of full-time staff = 36

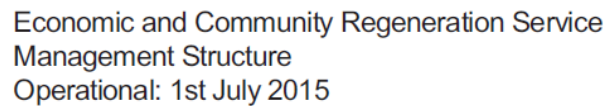

```

graph TD
    HECR[Head of Economic & Community Regeneration  
Dylan Williams]
    TM[Tourism & Maritime Manager  
Iwan Huws]
    CL[Commercial Leisure Manager  
Geraïlt Roberts]
    B[Business Manager  
Christian Branch]
    EDM[Economic Development Manager  
Aled Davies]
    PLO[Principal Officer Leisure  
Dave Barker]
    POSD[Principal Officer Sports Development  
Sian Mai Jones]
    PDCI[Principal Development Officer Supply Chain and Infrastructure  
Tudur Jones]
    VVP[VVP - Vibrant and Viable Places  
Dewi Lloyd]
    EIP[EIP - Energy Island  
John Idris Jones]
    PMO[PMO - Programme Manager Office  
Gareth Hall]
    RSP[RSP - Regional Supply Chain  
Nina Ruddle]

    HECR --- TM
    HECR --- CL
    HECR --- B
    HECR --- EDM
    EDM --- PLO
    EDM --- POSD
    EDM --- PDCI
    HECR --- VVP
    HECR --- EIP
    HECR --- PMO
    HECR --- RSP
  
```

Programmes

- VVP - Vibrant and Viable Places
Dewi Lloyd
- EIP - Energy Island
John Idris Jones
- PMO - Programme Manager Office
Gareth Hall
- RSP - Regional Supply Chain
Nina Ruddle





Visibility: tip of the iceberg

The portion of an iceberg that's visible above the water's surface typically only represents 11% of the iceberg's total volume (*Smart, 2013*).

Strategic influence, planning (unseen) and operational delivery (visible).

Statutory

- Deliver planning consents: risk of Judicial Review from opposition;
- Mitigate negative impacts;
- Planning Policy & Guidance;
- Highways, housing, socio-economic, environment, environmental health etc, S.106.
- Education

Non-Statutory

- Share information;
- Communicate and engage;
- Skills: Supply and demand;
- Supply Chain: Supply and demand;
- Infrastructure capacity;
- Enable people and businesses to capitalise;
- Information sharing with host communities;
- Collaboration and Engagement.

Enablers

- EU Structural Funding (2013-2020)
- EU Rural Development Plan Funding
- Enterprise Zone
- WG Core Capital & Revenue Funding (e.g. Regeneration Programme, WIIP, Communities 1st etc.)
- IACC core funding (match)
- NDA (Nuclear Decommissioning Authority)
- Anglesey Charitable Trust
- S.106 Agreements
- CBC's (Community Benefits Contributions)/ Corporate Social Responsibility

The Economic Outlook/Context...

- Economic and social transformation
- Growth and sustainable jobs
- Improved social well-being
- Reduced poverty
- Vibrant rural communities
- Young people reaching their potential
- Preventing out-migration / de-population
- Improved regional connectivity



Transformational Opportunities

- Wylfa Newydd
- Land & Lakes
- Orthios Biomass Plant
- Morlais Demonstration Zone
- Holyhead Port improvements
- Parc Cybi
- Anglesey Enterprise Zone
- Science Park, Gaerwen

Proposed Energy Related Developments

June 2015



Minesto

OFFSHORE DEVELOPMENTS
West Anglesey Tidal Current
Demonstration Zone
38km² of Seabed

Stena Line

Holyhead Port –
International Strategic Gateway



Proposed 1100 Unit mixed use
Development of Residential,
Tourism Village and Leisure
Facilities, Stage 1 – Wylfa
Workers Accommodation

Orthios

Proposed 299 MW Biomass /
Eco Park providing Energy &
Steam for Hydroponic &
Aquaculture Enterprises



Expansion of campus to include
extension of Energy Centre



TRAWSFYNYDD -
Continued decommissioning



Existing Wylfa Power Station –
460 MW of Low Carbon
Energy End of Generation
2015

PŴER NIWCLEAR
HORIZON
NUCLEAR POWER

Proposed New Nuclear Power
Station with generating capacity
of around 2.7 GW of Low
Carbon Energy



Electricity Distribution Network
Operator in North Wales -
Connects Smaller Electricity
Producers



Proposed Science Park bringing
together academic researchers
and commercial experts.
7.8 Hectares

nationalgrid

Connecting Proposed
New Low Carbon Energy
on Anglesey

www.ynysmon.gov.uk
www.anglesey.gov.uk



**CYNGOR SIR
YNYS MÔN
ISLE OF ANGLESEY
COUNTY COUNCIL**

Wylfa Newydd

- £10 bn capital expenditure
- 8,500 peak construction workforce
- 2 Advanced Boiling Water Reactors (minimum 2,700 MW)
- Associated developments
- 100 year commitment (social, environmental, economic legacy)

PŴER NIWCLEAR
HORIZON
NUCLEAR POWER



Images supplied by 'Horizon Nuclear Power'



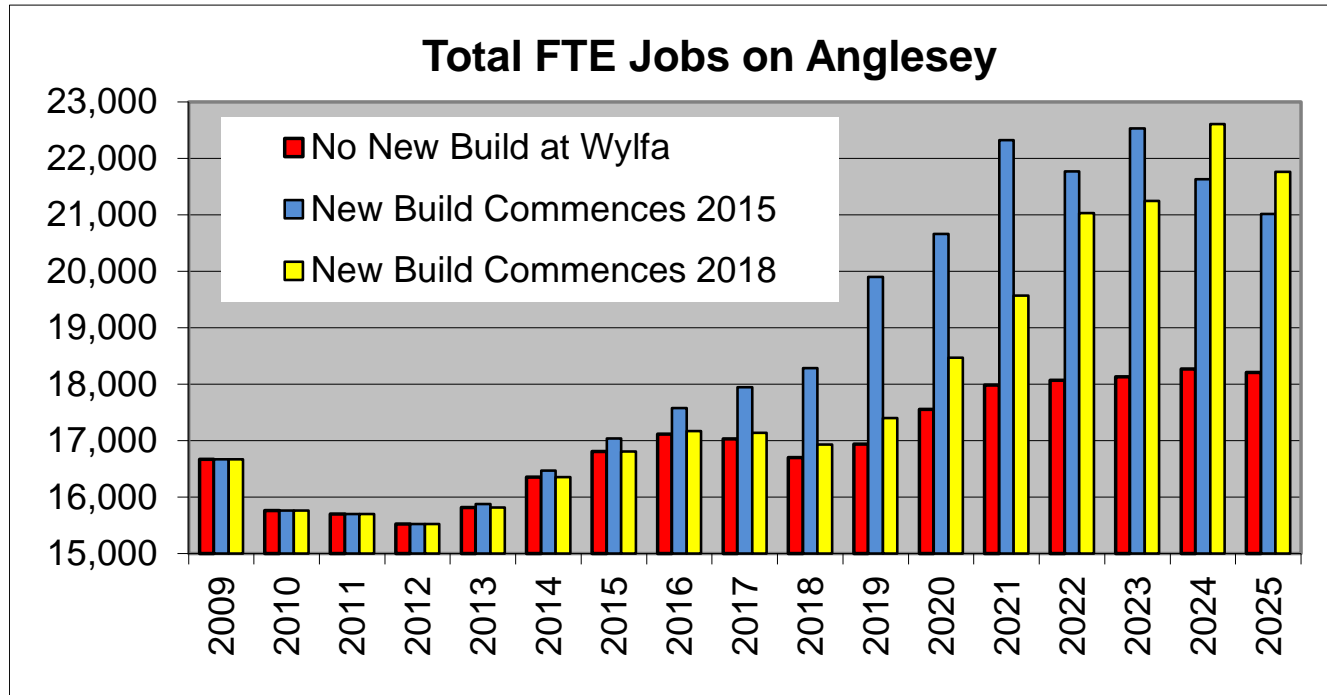
www.ynysmon.gov.uk
www.anglesey.gov.uk



CYNGOR SIR
YNYS MÔN
ISLE OF ANGLESEY
COUNTY COUNCIL

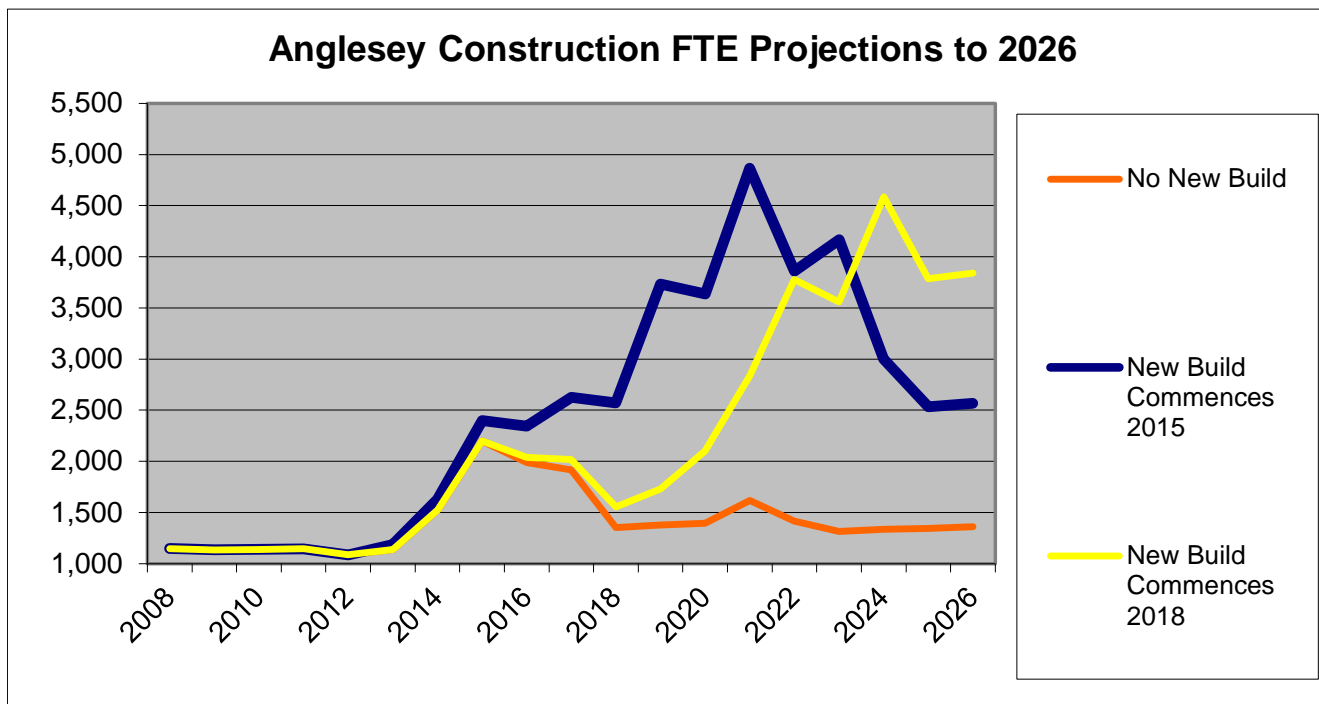
Employment Scenario Summary

Potential employment levels on Anglesey for three scenarios



Source: URS –Reassessment of Legacy targets, Benefits and Outcomes – June 2012

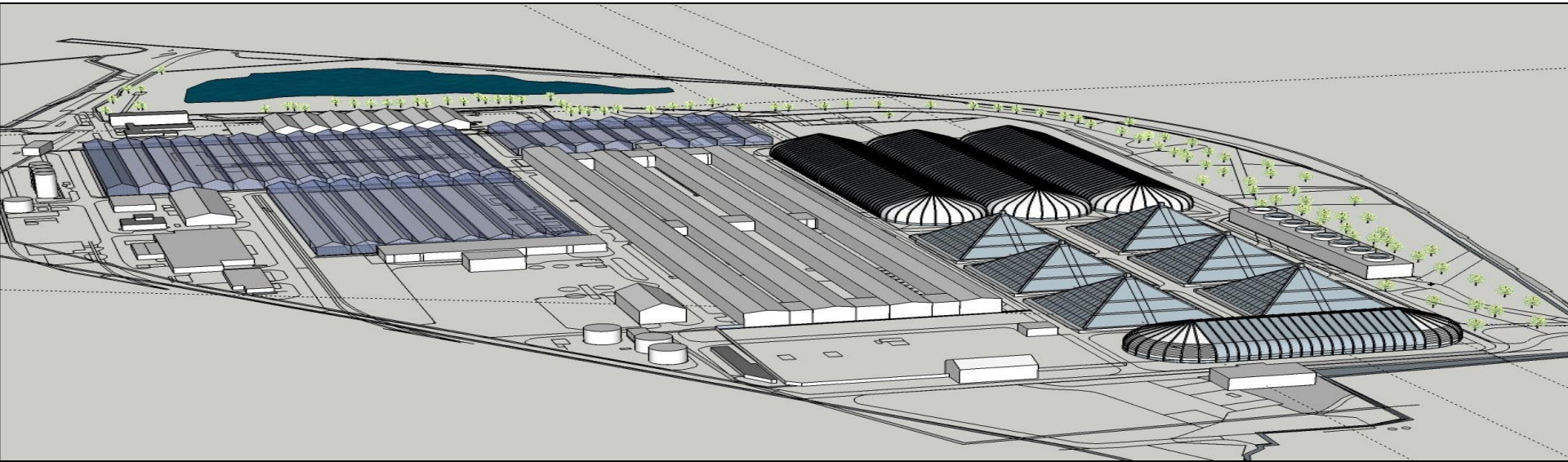
Potential construction employment levels (short-medium / medium-long-term) on Anglesey



Source: URS –Reassessment of Legacy targets, Benefits and Outcomes – June 2012

Biomass Eco Park - Holyhead

- Modular Biomass Plants
- 299 MW (consented)
- Links to Port / Jetty
- Consent re-issued end of 2013
- 600 construction jobs
- 400 permanent jobs



Marine Energy



- Emerging tidal turbine technology
- “Morlais Tidal Demonstration Zone” (licence secured from Crown Estate)
- Potential for 100 MW capacity
- MINESTO – Holyhead Deep, installation of a 10MW tidal array
- Local grid connection requirements



Conclusion

- Turbulent Period of Change
- Opportunities and Challenges ahead
- Commitment to Jobs & Growth
- Commitment to Collaboration
- Facilitatory/Enabling Public Sector Role
- Jobs & Growth created by Private Sector Investment

Contact Details

Dylan J. Williams
Head of Economic and Community Regeneration
Isle of Anglesey County Council
Anglesey Business Centre
Bryn Cefni Business Park
Llangefni
LL77 7XA

DylanWilliams@anglesey.gov.uk
(01248) 752435