



Sefydliad Ymchwil Gymdeithasol ac
Economaidd, Data a Dulliau Cymru

Wales Institute of Social and Economic
Research, Data and Methods

INSIGHT

2019 ANNUAL REPORT



The Wales Institute of Social and Economic Research, Data and Methods (WISERD) is a national, interdisciplinary, social science research institute.

We have been designated by the Welsh Government as a national research centre. Using innovative approaches, our research spans the fields of economics, sociology, geography and political science.

We are a collaborative venture between the universities of Aberystwyth, Bangor, Cardiff, South Wales and Swansea – working together to improve the quality and quantity of social science research in Wales and beyond.

Our research effects change by influencing the development of policy and practice across a range of sectors.

WISERD hosts the UK-wide WISERD Civil Society Research Centre, a major investment by the Economic and Social Research Council (ESRC), and a number of other major research grants.

At Aberystwyth University, WISERD includes the Centre for Welsh Politics and Society, and hosts the EU-funded GLOBAL-RURAL, IMAJINE and ROBUST projects.

WISERD also hosts the Administrative Data Research Centre Wales (ADRC-Wales) – a collaboration between Welsh Government, Swansea University and WISERD at Cardiff University. The Administrative Data Research Centre Wales is part of the ESRC funded Administrative Data for Research Partnership (ADRP).

WISERD publications data on pages 10 and 11 provided by Elsevier: www.elsevier.com



Director's report

A warm welcome to WISERD Insight. Here we report on 2018, a year that has seen a number of significant milestones in WISERD's journey towards increasing the quality and quantity of social science research in Wales and beyond.

We've been celebrating *WISERD at 10*, an important anniversary that marks a decade of influencing policy and debate. As a national centre for social science research, we could not have made it to this point without the continued hard work and dedication of our colleagues from across our five partner universities, and those further afield too.

Our contribution over the last 10 years has also been shaped by many key stakeholders, including policymakers, colleagues in the third sector and from across a variety of civil society organisations, all of whom have tirelessly supported our research and continue to work with us, finding new ways to increase further the impact of our research.

To celebrate *WISERD at 10*, we came together at the Senedd in Cardiff Bay, and were delighted to welcome Kirsty Williams, Cabinet Secretary for Education, and Lynne Neagle AM, to speak at the event. Kirsty Williams emphasised the importance of WISERD's research in providing policymakers with in-depth knowledge of civil society to inform decision-making.

We also launched *Changing Wales: WISERD at 10* at the Senedd event – a new publication showcasing some of our research from over the last ten years, and providing

an insight into some of the projects we are currently working on. If you haven't read this already, you can download it from our website: www.wiserd.ac.uk.

Other new publications in 2018 have included Aberystwyth University's WISERD Centre for Welsh Politics and Society report, *After Brexit: Ten Key Questions for Rural Policy in Wales*, which was launched at the House of Lords. We've also released postcards, detailing some of the most fascinating findings to come out of our WISERD Education Multi-Cohort Study. Both of these publications, among others, are also available to view on our website.

Other important projects from 2018 have involved working with key stakeholders and policymakers on childcare, education and the human rights of children. These include research at the University of South Wales on childcare modelling, and Cardiff's work on an Evidence Review and research support for the Children's Commissioner's 'What now?' project.

Dr David Dallimore has recently been awarded a Fellowship at the National Assembly for Wales and during 2019 he will be working with the Assembly Research Service to provide information about early childhood education and care (ECEC).

“WISERD's research and the data produced is invaluable as it provides us with an in-depth knowledge of civil society, and helps to assist in finding answers that allow us, through improved methods, to understand the impact of our decisions. This in turn helps us to make sure that we're delivering for the people of Wales.”

Kirsty Williams,
Cabinet Secretary for Education, Welsh Government

While *WISERD at 10* provided an ideal opportunity for reflection and the dissemination of findings, it has also marked the beginning of exciting new projects, successful funding bids, and the further expansion of our networks and collaborative work. Most notably,



a substantial amount of 'Centres Transition Funding' has been awarded to WISERD by the Economic and Social Research Council (ESRC) to help us develop our research programme further.

Further support from the ESRC has allowed researchers at Cardiff University to continue working as part of the newly funded Administrative Data for Research Partnership (ADRP). Also in relation to data and how we're working to maximise its uses for researchers, we're building on our WISERD Education Multi-Cohort Study and the recent work we've done on the 'Successful Futures for All' project to launch our WISERD Education Data Lab, which is co-funded by the Welsh Government.

We're also really pleased to have seen Dr Sioned Pearce, one of our early career researchers at Cardiff University receive support from the ESRC in the form of a New Investigator Grant. This will allow us to create the first cross-comparative dataset on civil society activity in youth unemployment, in the context of devolution.

At Swansea University, we've recently established our WISERD Politics and Governance Research Network – one of many new multidisciplinary collaborations. Other recent collaborations include our fourth and most well-

attended Wales Housing Research Conference 2019, which was run in partnership between WISERD's Wales Housing Research Network, the UK Collaborative Centre for Housing Evidence (CaCHE), Shelter Cymru and the Welsh Government.

Our network links continue to extend globally too. WISERD research at Aberystwyth University is continuing as part of the Integrative Mechanisms for Addressing Spatial Justice and Territorial Inequalities in Europe (IMAJINE) project, which was involved in the European Week of Regions and Cities this year. The GLOBAL-RURAL project also recently hosted a successful international symposium.

WISERD has established a new European collaborative agreement with TRIANGLE, a cross-institutional, multidisciplinary research centre in Lyon. The start of the new partnership was marked by a conference in France on 'Trust-Transparency Paradoxes'.

2018 saw the start of two new projects as part of the Global Challenges Research Fund. These have taken our researchers to India, working with new partners on issues around human and workers' rights, and social justice. Some of these findings were presented as part of a WISERD keynote address at the 2018 HM Treasury, Government Economic Service and Government Social Research Annual Conference.

“WISERD demonstrates the depth and quality of collaborative research in Wales, consistently producing social science research with outcomes at a national and international level.”

Jennifer Rubin,
Executive Chair of the Economic and Social Research Council (ESRC)



We welcomed many international visitors, from Australia, China, Brazil, India, Bangladesh and the USA for conferences and to present WISERD seminars.

“WISERD has gone from strength to strength and is now firmly established as an internationally credible source of independent research evidence in Wales, for Wales and making a real difference to the people of Wales.”

Dr David Blaney,

Chief Executive of the Higher Education Funding Council for Wales (HEFCW)

In addition to our regular seminars and training events, our 2018 calendar offered a more varied line-up of events than ever before. These included a two-day colloquium on Social Innovation in the Foundational Economy, with a keynote from First Minister of Wales, Mark Drakeford. Also, a series of four events took place as part of the Economic and Social Research Council (ESRC) Festival of Social Sciences. These covered topics as diverse as education, migrants, trade union campaigns and the WISERD DataPortal.

Perhaps unsurprisingly, given the nature of our research against the political backdrop of Brexit, many of our projects and events in 2018 have focused on Wales' multiculturalism and global links.

The WISERD Centre for Welsh Politics and Society at Aberystwyth University hosted a research workshop exploring globalisation and the potential for personal carbon accounts. We also delivered an event at Oasis, a refugee and asylum seeker centre in Cardiff, which explored how civil society has responded to refugees and asylum seekers in different parts of Wales. Migration and diversity in Wales were also the topic of this year's E. G. Bowen Memorial Lecture, part of our contribution to the 2018 National Eisteddfod.

Our 2018 Annual Conference was our biggest to date and took place at the University of South Wales with over 200 delegates attending over two days. This year's Conference on 'Civil Society and Participation' will take place at Aberystwyth University and promises to offer a strongly international perspective.

We are not only grateful for the support of everyone in the WISERD community who has helped us reach WISERD at 10 but are also excited about the prospect of what the next year will bring. We believe that our collaborative and multidisciplinary partnership makes WISERD exceptionally well-placed to take advantage of the new opportunities made possible by the establishment of the UKRI.

I hope this report gives you an idea of developments in our work and a flavour of what you can look forward to hearing about in the coming year.

Ian Rees Jones

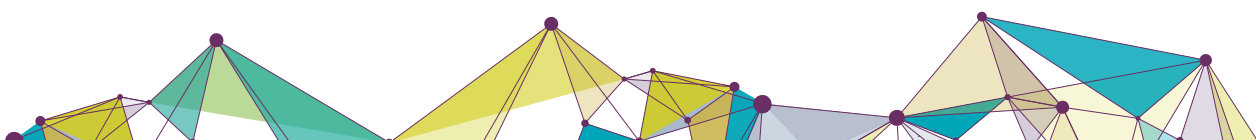
WISERD Director



Kirsty Williams, Cabinet Secretary for Education speaking at WISERD at 10



WISERD Director and Co-Directors from our five partner universities

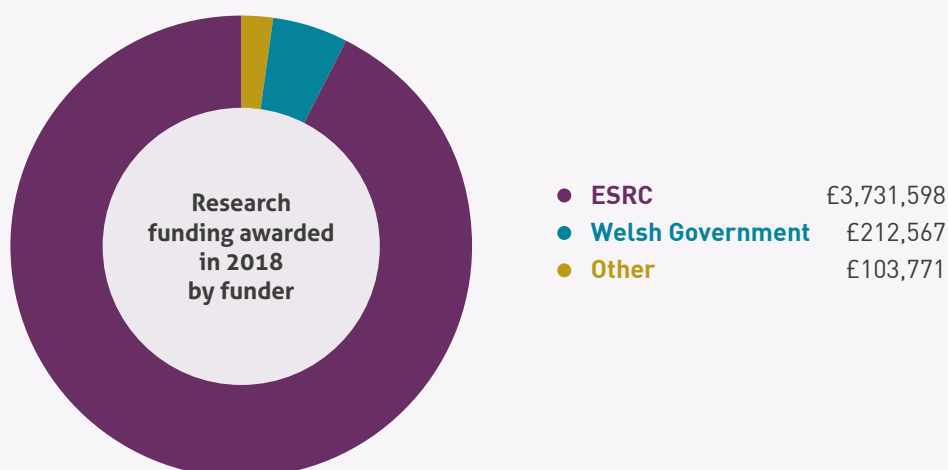


Income profile

Research grant capture in 2018

During 2018 WISERD applied for **44 research grants** across all the WISERD HEIs and was included in research bids with other organisations to a value of **£30.4m**.

WISERD's total research grant capture for 2018 was: **£4,047,935**.



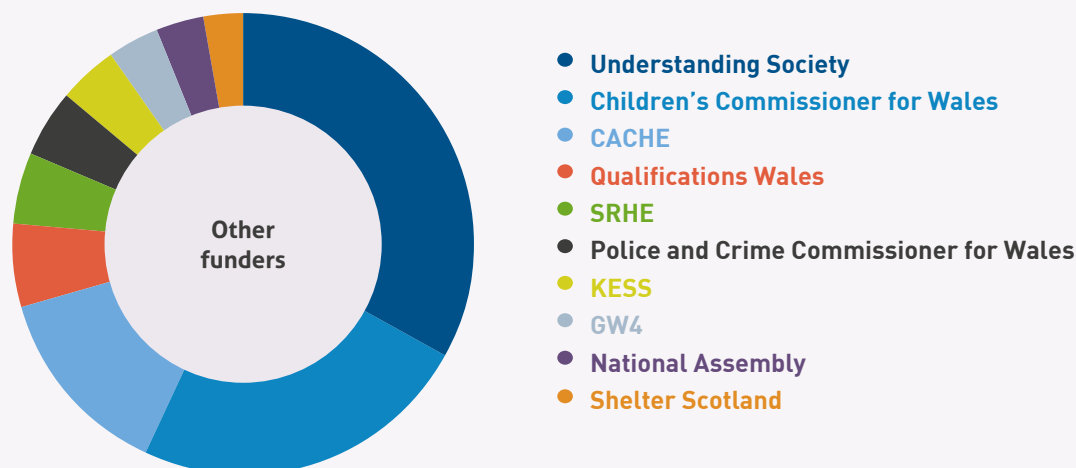
Over **£3.7m** of this funding was from the Economic and Social Research Council (ESRC) and includes the following large research grants:

• WISERD Civil Society Transition funding	£1,930,000
• Administrative Data Research Centres 2018	£909,300
• GCRF Project funding	£563,000

Over **£212.5k** of this funding was from the Welsh Government and includes the following large research grant:

• WISERD Education Data Lab	£180,000
-----------------------------	----------

Over **£103.7k** of this funding was from other funders:



New funding in 2018

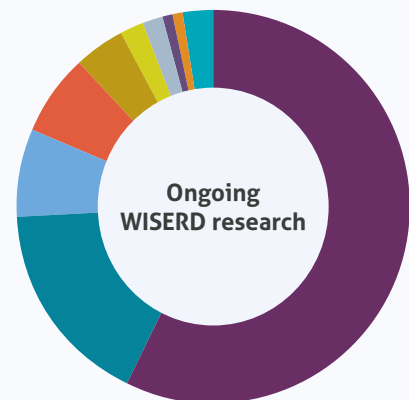
WISERD has an outstanding track record of winning competitive research funding. In 2018 we successfully secured new funding from a wide range of organisations in the public and third sectors.



Current WISERD research

The value of ongoing WISERD research in 2018 was **£13,575,504** across **26** research grants.

● WISERD Civil Society: ESRC Large Centre	£7,788,483
● Global Rural Project: European Research Council	£2,300,000
● IMAJINE: Horizon 2020 Programme	£969,833
● Administrative Data Research Centre 2018	£907,299
● GCRF Project funding	£562,922
● ROBUST: Horizon 2020 Research and Innovation Programme	£275,700
● WISERD Education Multi-Cohort Study	£215,256
● Successful Futures for All: HEFCW Project	£125,000
● Post-doctoral Fellowship	£100,000
● x17 Other funded research projects under £100k each	£331,011

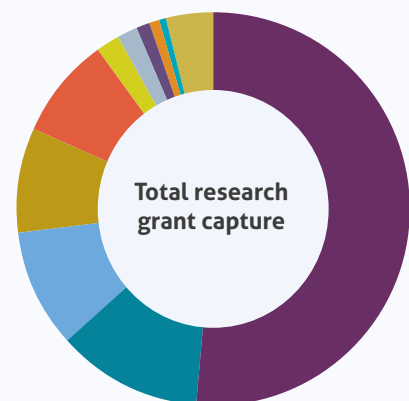


Research grant capture 2009-18

Since 2009 WISERD has submitted **228** research funding bids across the WISERD HEIs, with a success rate of **55%** (with an additional 4% of funding decisions still outstanding).

WISERD's total research grant capture since 2009 is **£27.9m**.

● ESRC	£14,416,837
● Welsh Government	£3,328,436
● HEFCW	£2,708,518
● European Commission	£2,420,533
● European Research Council	£2,300,000
● WEFO	£566,986
● NIHR	£416,136
● Alzheimer's Society	£311,691
● Cardiff University Research Infrastructure Fund	£267,876
● Joseph Rowntree Foundation	£119,137
● Other funders	£1,079,419



International links

WISERD is proud to have established many international links, through fieldwork, collaborative research, hosting visiting academics and attending conferences abroad. Some of these are highlighted below.

France

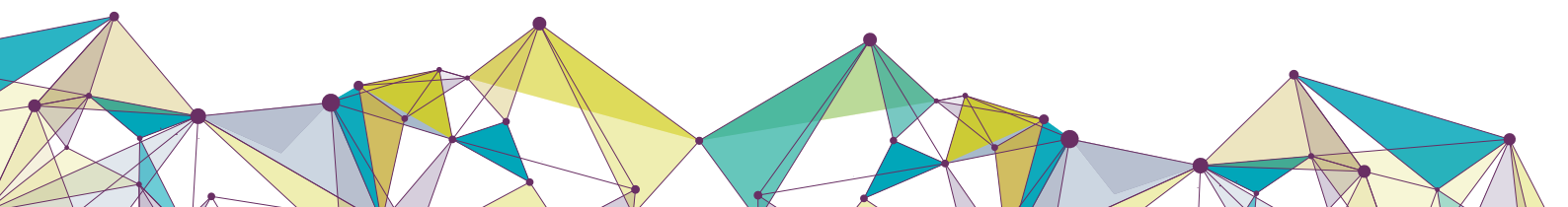
A new European collaborative agreement has been made between WISERD and TRIANGLE, a cross-institutional, multidisciplinary research centre in Lyon. TRIANGLE comprises ENS de Lyon, Université de Lyon 2, IEP de Lyon, Université Jean Monnet Saint-Etienne and the French National Centre for Scientific Research (CNRS).

USA

Professor Merrill Silverstein from Syracuse University in New York is on WISERD's Advisory Board. He joined colleagues in Cardiff to present a seminar on 'Ethnic community engagement and psychological wellbeing of older Chinese-American immigrants'.

Brazil

As part of the GLOBAL-RURAL research project based at Aberystwyth University, researchers visited the Kaiowá and Guarani people who live near Dourados, in the southwestern state of Mato Grosso do Sul. The project investigates how increasing worldwide integration is impacting the Brazilian countryside and its inhabitants. WISERD has also hosted a number of PhD and Erasmus students from Brazil.



Italy

WISERD is continuing to work with Professor Filippo Barbera from the University of Torino in developing our emerging Foundational Economy research theme.

India

WISERD is working on a Global Challenges Research Fund (GCRF) project with new research partners, CIVIDEP in Karnataka, India. Gopinath Parakuni, General Secretary of CIVIDEP joined WISERD colleagues in Cardiff for a seminar on 'Exploiting Labour in the Garment and Leather Sectors in Bangalore'.

Bangladesh

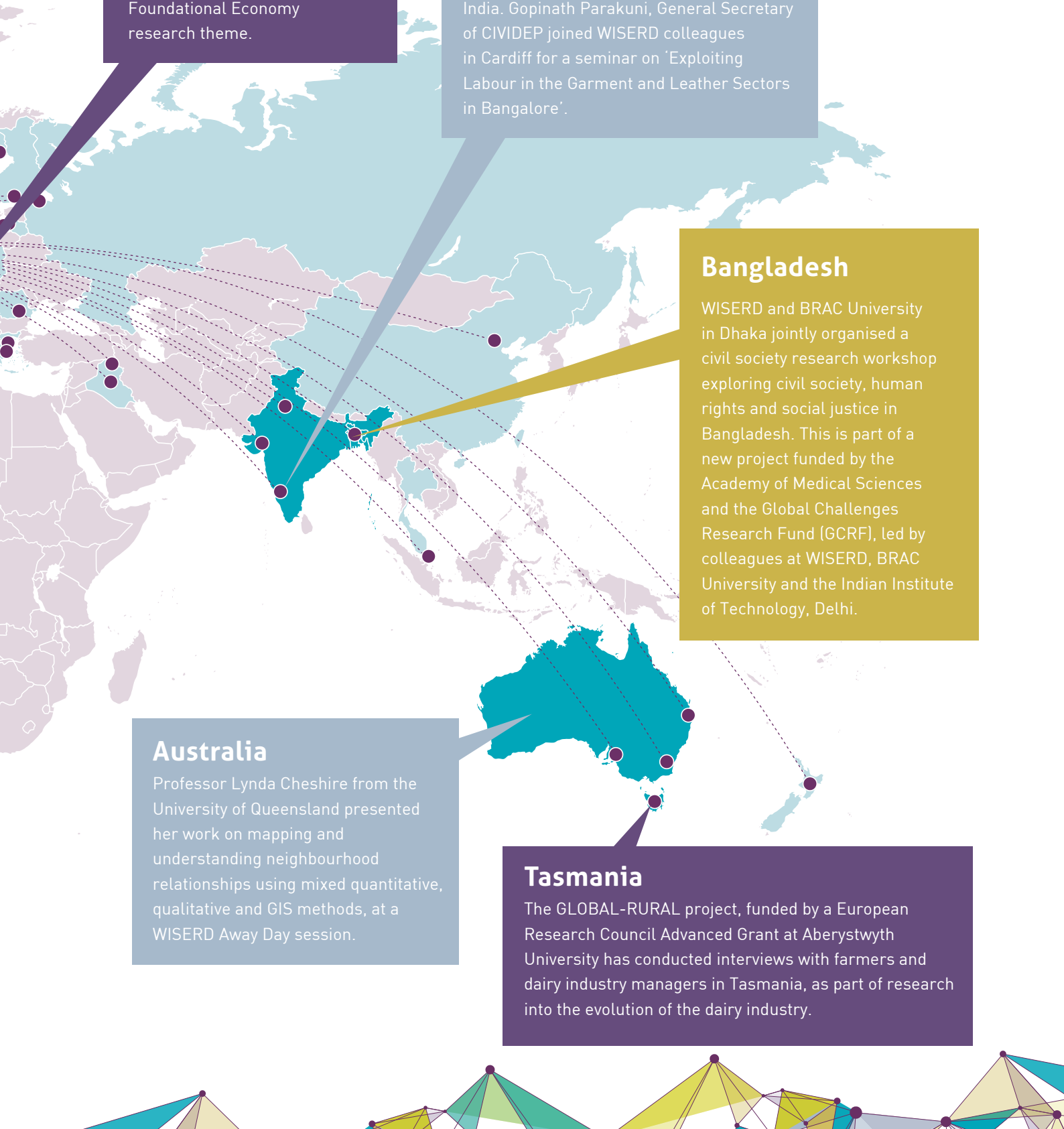
WISERD and BRAC University in Dhaka jointly organised a civil society research workshop exploring civil society, human rights and social justice in Bangladesh. This is part of a new project funded by the Academy of Medical Sciences and the Global Challenges Research Fund (GCRF), led by colleagues at WISERD, BRAC University and the Indian Institute of Technology, Delhi.

Australia

Professor Lynda Cheshire from the University of Queensland presented her work on mapping and understanding neighbourhood relationships using mixed quantitative, qualitative and GIS methods, at a WISERD Away Day session.

Tasmania

The GLOBAL-RURAL project, funded by a European Research Council Advanced Grant at Aberystwyth University has conducted interviews with farmers and dairy industry managers in Tasmania, as part of research into the evolution of the dairy industry.



Publications

WISERD produces a range of publications for academic, policy and practitioner audiences, including newsletters, reports and blog posts.

In 2018, WISERD published **over 80** academic publications.

These included:

Journal articles:	61
Books:	3
Book chapters:	4
Reports and briefings:	12
Datasets:	2

Additionally, WISERD published **over 40** blogs. These included:

WISERD blog posts:	43
<i>The Conversation</i> blog posts:	8

Since 2008, WISERD has published **over 650** academic publications.

These included:

Journal articles:	over 310
Books and book chapters:	over 100
Reports and briefings:	over 110

Journal articles published in 2018

Outputs in top citation percentiles

Publications in top 10% most cited worldwide

18.8%

International collaboration

Publications co-authored with institutions in other countries

14.6%

Publications in top journal percentiles

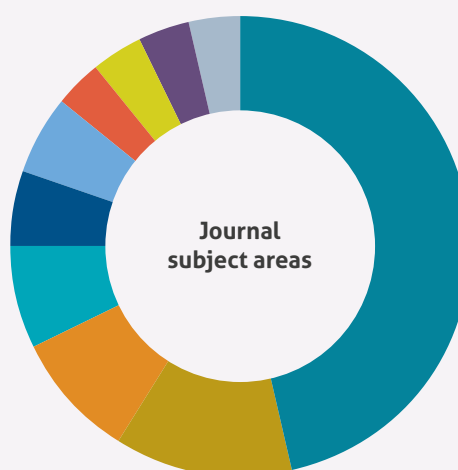
Publications in top 10% journals by CiteScore Percentile

39.6%

© 2019 Elsevier B.V. All rights reserved. SciVal, RELX Group and the RE symbol are trademarks of RELX Intellectual Properties SA, used under license.

WISERD journal articles cover a range of subject areas:

● Social sciences	45.5%
● Medicine	12.7%
● Psychology	9.1%
● Arts and humanities	7.3%
● Economics, econometrics and finance	5.5%
● Environmental sciences	5.5%
● Agricultural and biological sciences	3.6%
● Business, management and accounting	3.6%
● Nursing	3.6%
● Other	3.6%



Within Social Sciences, WISERD journal articles cover:

- Political science and international relations
- Education
- Geography, planning and development
- Life-span and life-course studies
- Sociology and political science

Top five cited articles published in 2018



Re-stating the post-political: Depoliticization, social inequalities, and city-region growth

Etherington, D. and Jones, M.

(2018) Environment and Planning A, 50 (1), pp. 51-72.



Young people's views on choice and fairness through their experiences of curriculum as examination specifications at GCSE

Barrance, R. and Elwood, J.

(2018) Oxford Review of Education, 44 (1), pp. 19-36.



Neoliberalization, uneven development, and Brexit: further reflections on the organic crisis of the British state and society

Jessop, B.

(2018) European Planning Studies, 26 (9), pp. 1728-1746.



The general decay of Euroscepticism in the UK and the EU referendum

Fox, S. and Pearce, S.

(2018) Journal of Elections, Public Opinion and Parties, 28 (1), pp. 19-37.



Living well with dementia: A systematic review and correlational meta-analysis of factors associated with quality of life, well-being and life satisfaction in people with dementia

Martyr, A., Nelis, S.M., Quinn, C., Wu, Y.T., Lamont, R.A., Henderson, C., Clarke, R., Hindle, J.V., Thom, J.M., Jones, I.R., Morris, R.G., Rusted, J.M., Victor, C.R., Clare, L.

(2018) Psychological Medicine, 48 (13), pp. 2130-2139.

See more publications on our website: www.wiserd.ac.uk/publications.

Events and engagement 2018

WISERD events and training

WISERD organised a variety of events throughout 2018, including conferences, seminars, practical workshops and training. These provide opportunities to:



**Share our
research findings**



**Develop
research skills**



**Find new
methodologies**



**Collaborate with partners
and stakeholders**

Over **1,000** people registered to attend WISERD-organised or hosted events in 2018, including researchers and PhD students, colleagues from the third sector and business sector, policymakers and practitioners.

- Over **250** people attended 13 training events. These included courses in Cardiff delivered by the National Centre for Research Methods, a course on working with spatial data, and practical workshops at Aberystwyth University and Bangor University on researching Wales and writing for wellbeing. We also ran writing weeks and provided mentoring to international doctoral research students.
- Over **200** people attended the WISERD Annual Conference 2018 at the University of South Wales. Students participated in two postgraduate competitions, held in partnership with the Economic and Social Research Council (ESRC) Wales Doctoral Training Partnership and the Learned Society of Wales.
- Over **460** people attended other WISERD conferences, such as the WISERD at 10 celebrations at the Senedd. Others included the 3rd Welsh Retail and Leisure Summit in Cardiff, organised with the Local Data Company, a symposium on family and civil society in London, a conference on trust-transparency paradoxes in Lyon, organised with WISERD's new European partner, TRIANGLE, and an ESRC-funded colloquium on social innovation in the foundational economy, in Cardiff and Ebbw Vale.
- Over **90** people attended four ESRC Festival of Social Science events. We visited a local secondary school to share findings from our WISERD Education longitudinal multi-cohort study, hosted a panel discussion on EU migration and civil society, and provided a practical workshop on using the WISERD DataPortal. We also partnered with the Wales TUC to deliver a workshop on the strategic use of social media in trade union organising.

WISERD contributed towards academic conferences organised by the Political Studies Association and the Royal Geographical Society (with the Institute of British Geographers). Also, public engagement events such as Gofod3 – an event that attracted over 600 delegates, organised by the Wales Council for Voluntary Action in collaboration with the third sector in Wales.

Digital engagement



WISERD website page views
104,064



WISERD website users
32,079



Mailing list subscribers
1,993



Twitter followers
4,123